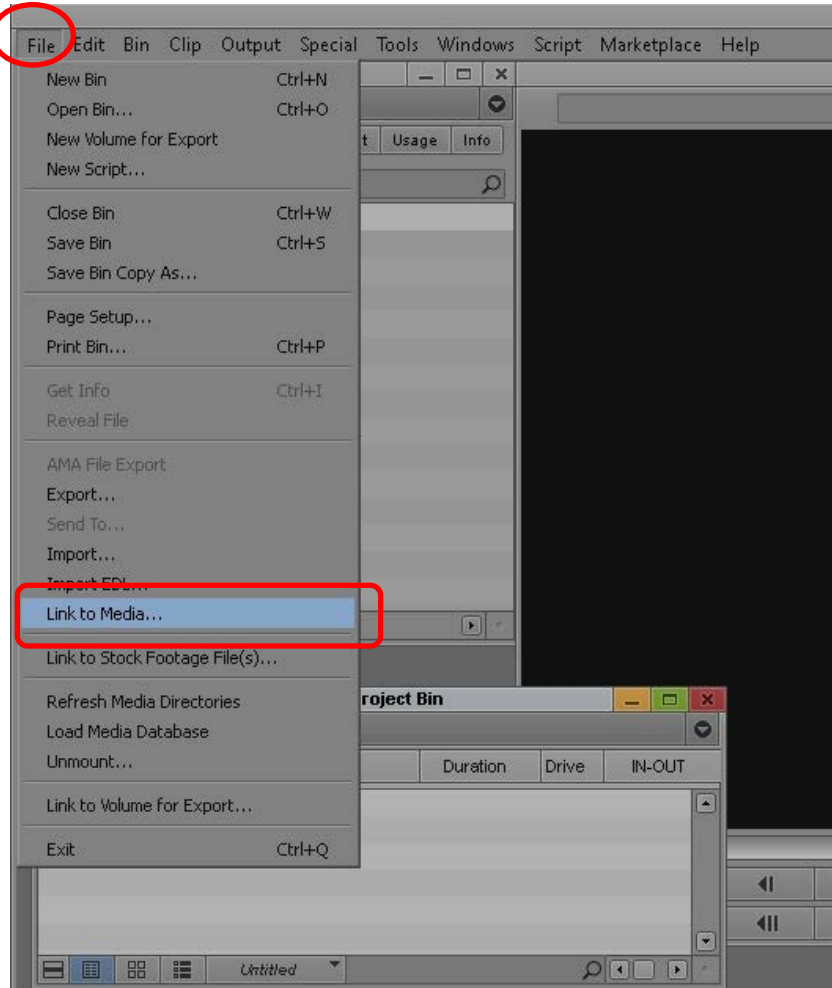


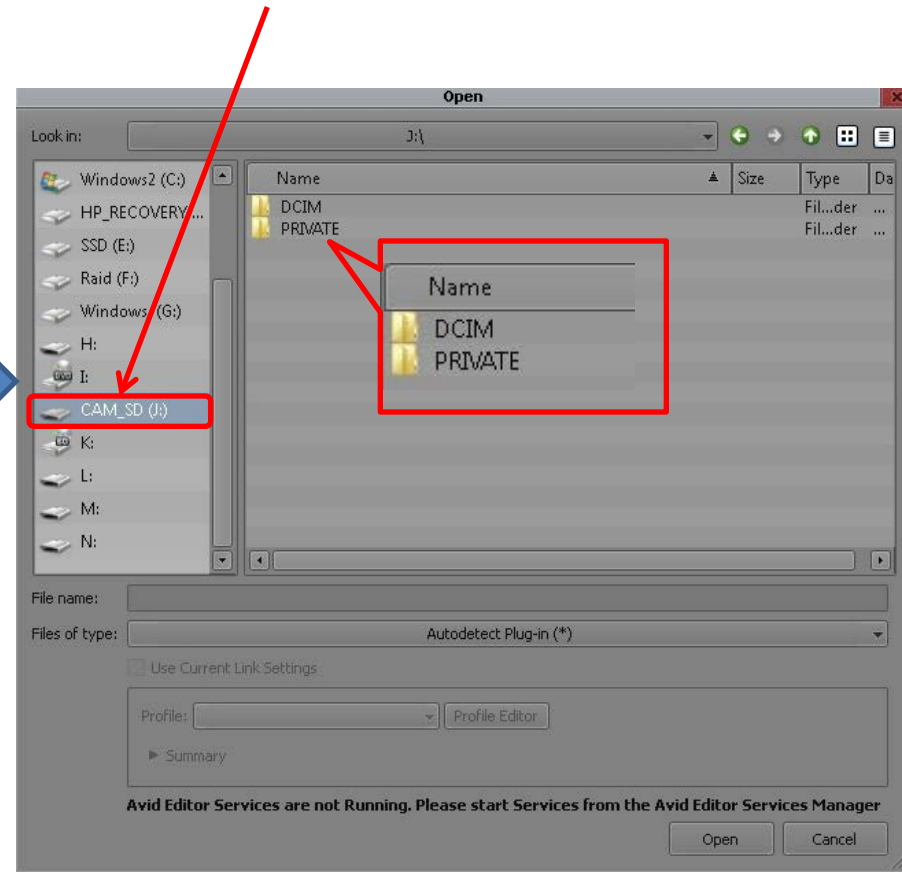
DVX200 クリップ取り込みガイド

Media Composer 8.4.0

1) クリック [File] > [Link to Media ...]



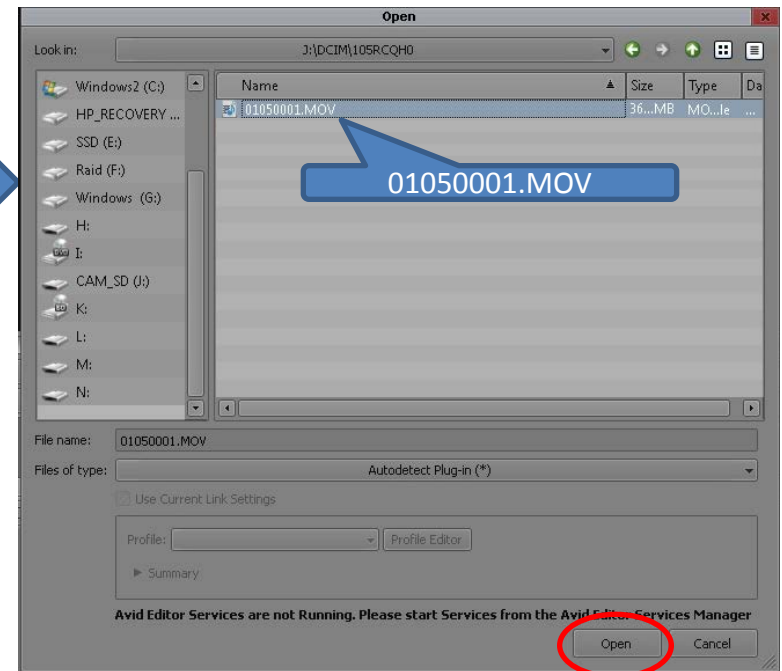
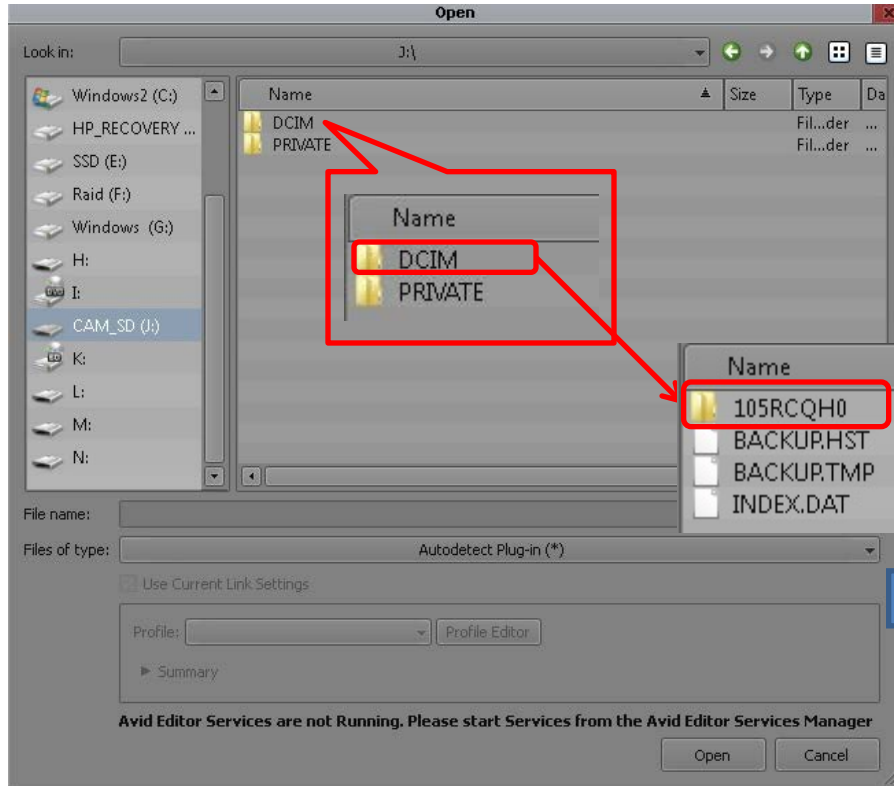
2) インポートするSDカードを選択。



DVX200 クリップ取り込みガイド

Media Composer 8.4.0

3) [DCIM] > [(サブフォルダー)] > [*****.MOV] を選択し、[Open] をクリック。



DVX200 クリップ取り込みガイド Media Composer 8.4.0

4) クリップがビンに取込まれました。

The screenshot displays the Avid Media Composer interface. The main preview window shows a video clip of a desk with a clock and a sign that reads 'AVCHD 50i (PH)'. The bin list at the bottom shows a single clip named '01050001' with a duration of 31:15. A red box highlights the clip name in the bin list, with the text 'ビンに取込まれたクリップ' (Clip imported into bin) overlaid on it.

Name	Creation Date	Duration	Drive	IN-OUT	Mark IN	Mark OUT	Format	Tracks	Start	Tape	Video	AMA Plug-in	TapeID	Audio SR	Field C
01050001	8/28/2015 15:29:31	31:15	AMA (J:\DCIM\105RCGH0)				3840x2160p/29.97	V1 A1-2	02:00:00:00		H.264	QuickTime Plug-In		48000	Def